



# CHEVRON PARQUET

*Unrivalled level of options in specifying custom Chevron and  
Herringbone parquet flooring*



Floor creator Dennis Bergh began his journey into flooring by producing limited amounts of handcrafted antique oak boards at Kåseholm Castle, Sweden. With a deep passion for oak flooring and its many exquisite patterns, an idea began to bloom. In 2016, Dennis decided to develop the company to be the most sophisticated and advanced producer and supplier of Chevron and Herringbone parquet, worldwide. An innovative range of patinas incorporates both antique and contemporary design concepts, blending a rich history, new technology and an expansive approach to creativity and craft.

# Herringbone parquets



# Chevron parquets





Antique Oak floor are generally reclaimed in a variety of widths, thicknesses and lengths. The general condition can vary considerably, and most batches require some re-engineering and processing to create a viable flooring option.

The secret to this is to protect and retain the antique patinated surfaces built up over the centuries. It is this original old weathered and worn surface which gives these lines a totally unique quality and a board by board individual character.

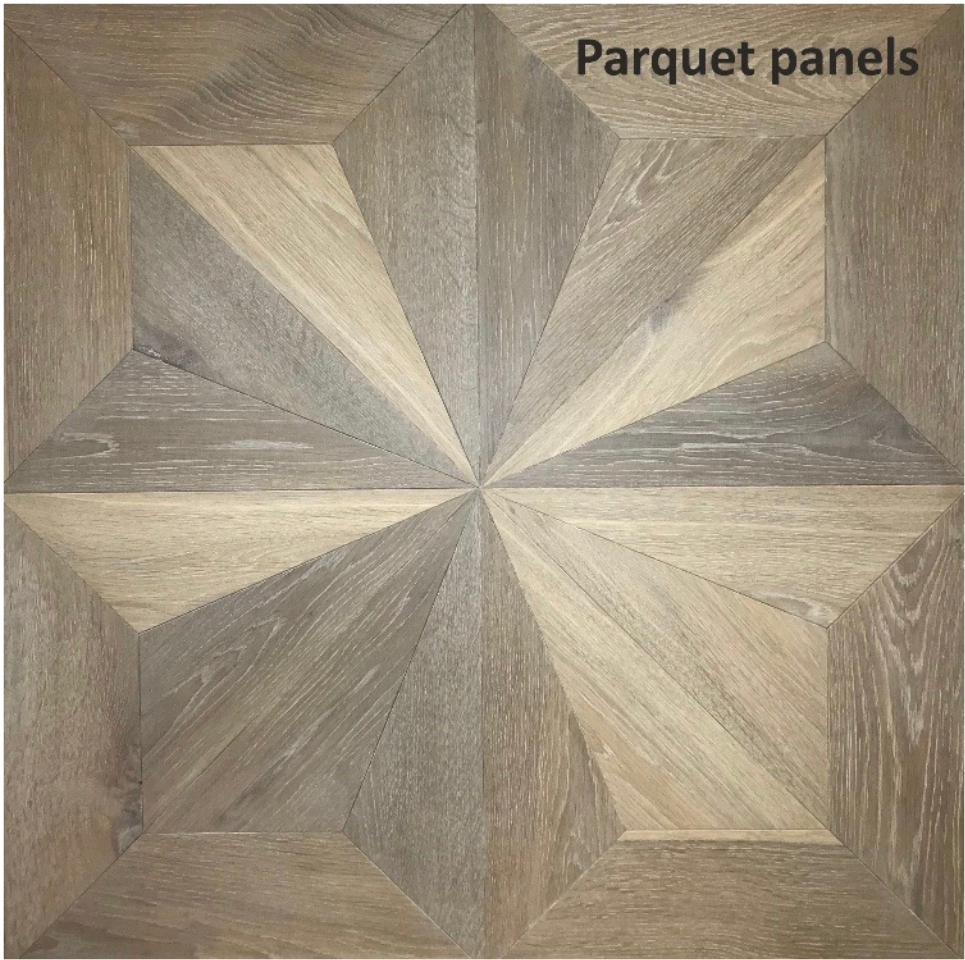
We can hand restore these surfaces with a range of traditional finishes to complement and backdrop that period interior. The finished colour and degree of patination or rusticity can be adjusted within the finishing process whilst depth of colour and quality of finish is infinitely variable.

# Antique & reclaimed





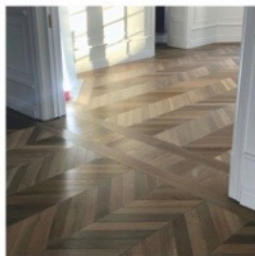
**Parquet panels**



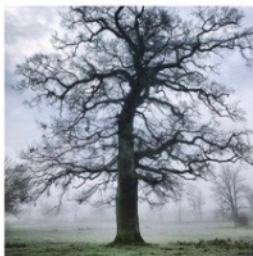




***Unrivalled level of options in specifying custom Chevron and Herringbone parquet flooring. See below options.***



Patterns & Dimensions



Species



Constructions



Colours

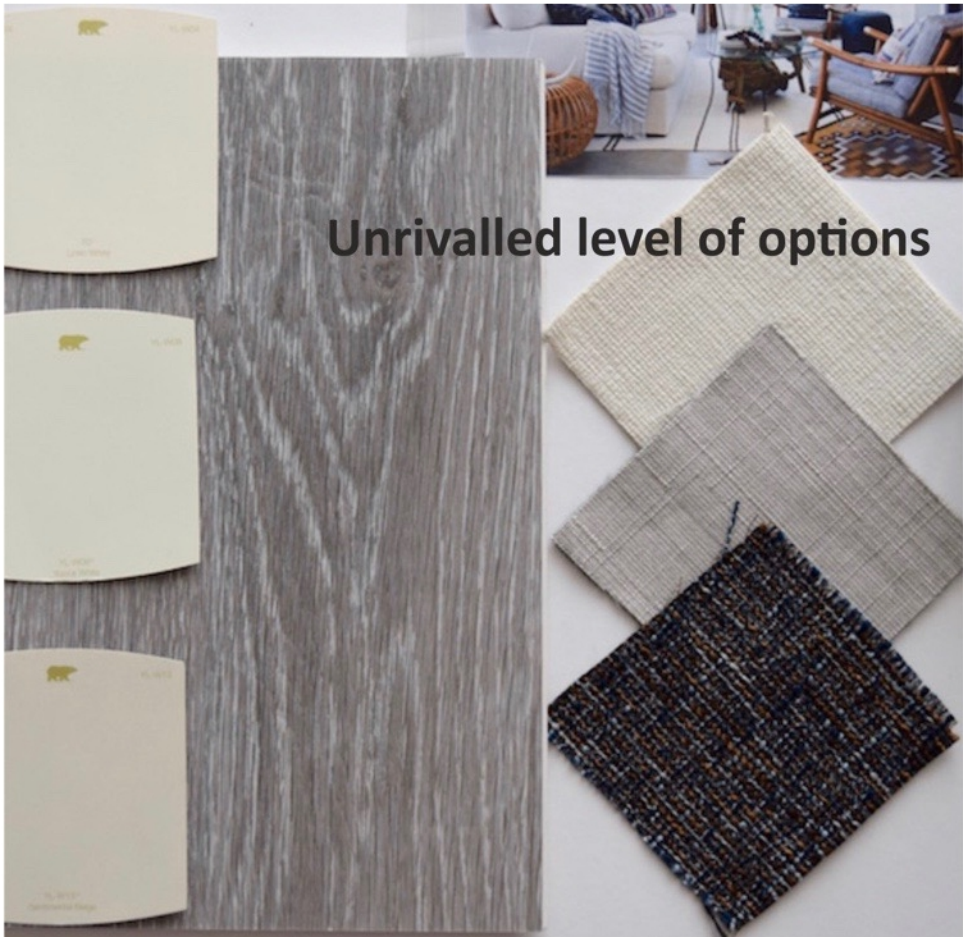


Finishes

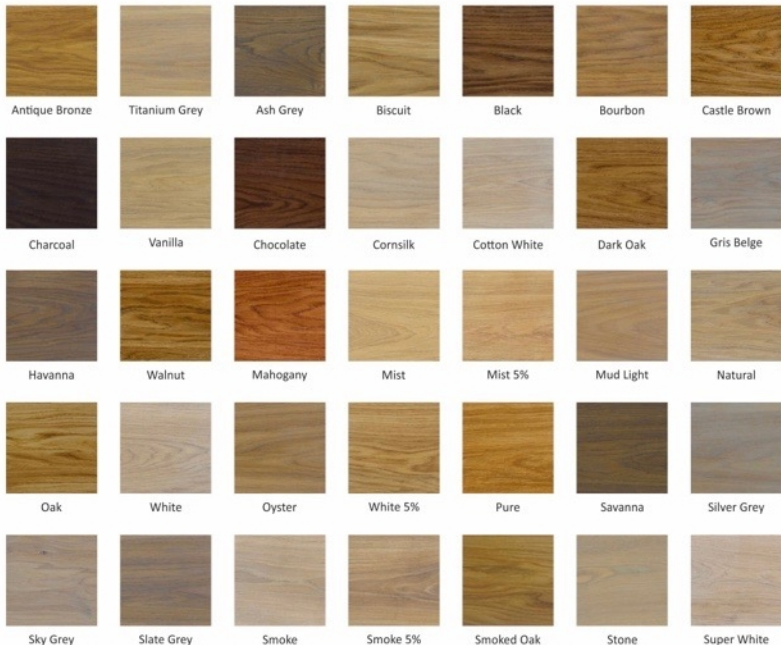


Grades

**Unrivalled level of options**



# 40 standard colours



or your own

# Colour lab



Many factors can influence the selection of floor colour and finish. From the size of the room to the level of light it receives, from wall or cabinet colours to furnishings, many aesthetic elements come together when considering colour. Chevron Parquet has outstanding expertise in making custom colour tone recommendations. Sometimes this means several options should be considered in order to ensure that it's just right. Chevron Parquet can both formulate and test these options.

Additionally, if you desire other special features, such as a hand scraped surface, bevels, colour filing or other unique features, we are able to make custom samples for your consideration.



---

# CHEVRON PARQUET

---

*Unrivalled level of options in specifying custom Chevron and  
Herringbone parquet flooring*

Agent:

Chevron Parquet Scandinavia AB, Nybrogatan 79, 114 41 Stockholm, Sweden

[www.chevronparquet.com](http://www.chevronparquet.com)